

For: File Resubmit Approval Other _____

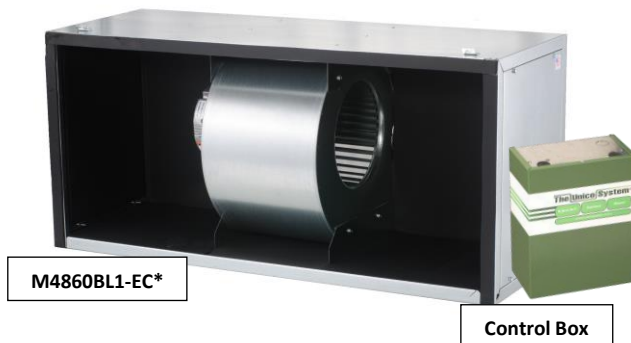
M4860BL1-EC* 5.0-ton SDHV Modular Variable Speed Air Handler (Blower)

Green Series

Job Name:	Location:
Date:	Tag #:
Architect:	Engineer:
Mechanical:	Distributor:
Rep:	

(Company)

(Project Manager)



Features

- Modular construction
- Multiple configurations
- Right-Handed and Painted options available
- EC Motor (variable speed)
- High system efficiency
- Easy service motor/blower
- Constant airflow
- Programmable using Windows PC
- Includes S.M.A.R.T. control board

Matching Modules

M4860CL1-B
M4860CL1-E
M4860CL1-C
M4860CL1-H
M4860V*
M4860R1

Indoor Unit Size

4860

Operating Range:

Nominal Airflow	1250 CFM (2124 m³/h)
Static pressure at nominal airflow	1.5 in. w.c. (373 Pa)
Airflow Range	400 to 1500 CFM (680 to 2549 m³/h)

General Data:

Blower wheel diameter	9.5 in. (241 mm)
Blower wheel width	7.75 in. (197 mm)
Fan motor type	ECM
Fan motor size	1hp (750 W)
Fan Speeds	Variable
Maximum motor speed	1800 RPM
Maximum air temperature over motor	150 °F (65 °C)
Supply duct size, minimum	10 in. (254 mm)
Sound Pressure Level*	58 dB(A) NC-50
Net unit weight	68 lbs. (31 kg)
Shipping Weight	74 lbs. (34 kg)
Dimensions (H x W x D)	17.5 x 38 x 14 in. (445 x 965 x 349 mm)

* Measured 3 ft (1 m) from unit

Electrical:

Control Box Style	<u>EC2</u>	<u>EC3</u>
Power Supply (Hz, Ph)	50/60, 1	
Voltage	120V/208V/230V	
Full Load Current	10.2 A/6.1 A	
Min. Circuit Ampacity	12.8 A/7.7 A	
Max. Overcurrent Protection	15 A	
Allowable Breaker Sizes	15 A	

Optional Accessories

- Control box extension cable, 98" (2.5 m) (A01525-G02)
- Hot water coil heating module (M4860CL1-H)
- Return air module with filter (M4860R1)
- Vertical base module with filter (M4860V*)
- Secondary drain pan, 2 module (UPC-24C)
- Secondary drain pan, 3 module (UPC-24D)
- Supply duct adapter, round (UPC-61-4860)
- Supply duct adapter, square (UPC-62-4860)
- Return adapter (UPC-104-4860)

Notes:

1. Absolute operating voltage range: 104V – 127V, 188V – 254V
2. All wiring and piping must comply with applicable local and national code.
3. Refer to installation manual for more information.

Model Number Key:

M	4860	B	L	1	-	EC*	1
Model Series	Matching ODU Nominal Capacity	Module Type	Configuration	Revision		Motor Style	Options
M = Modular	4860 = 48000 to 60000 Btu/hr	B = Blower	L = Left R = Right			EC2 = 120V – 208/230V EC3 – 120V – 208/230V, CE Certified	1 = Paint White

ODU = Outdoor Unit

M4860BL1-EC*

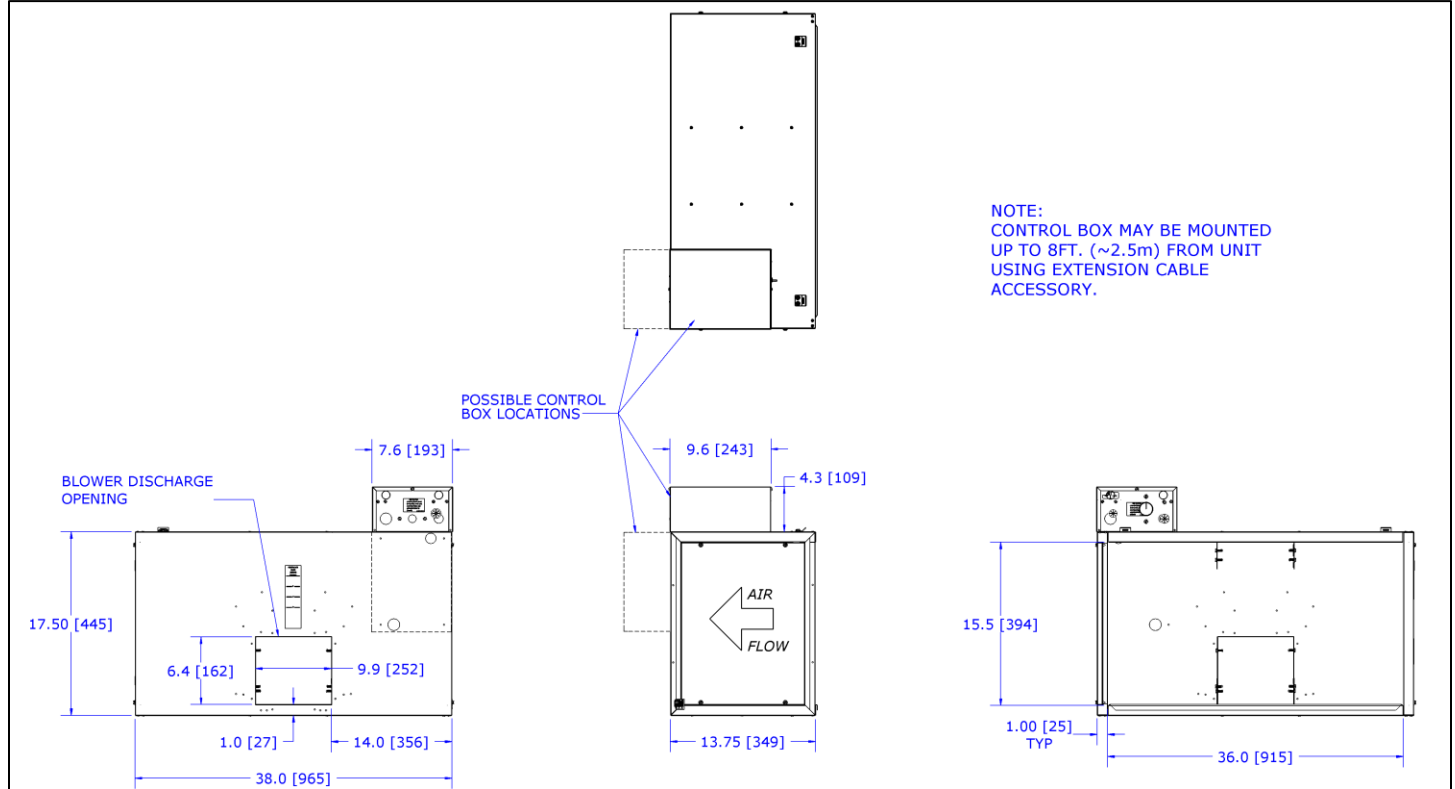
Job Name:

Location:

Date:

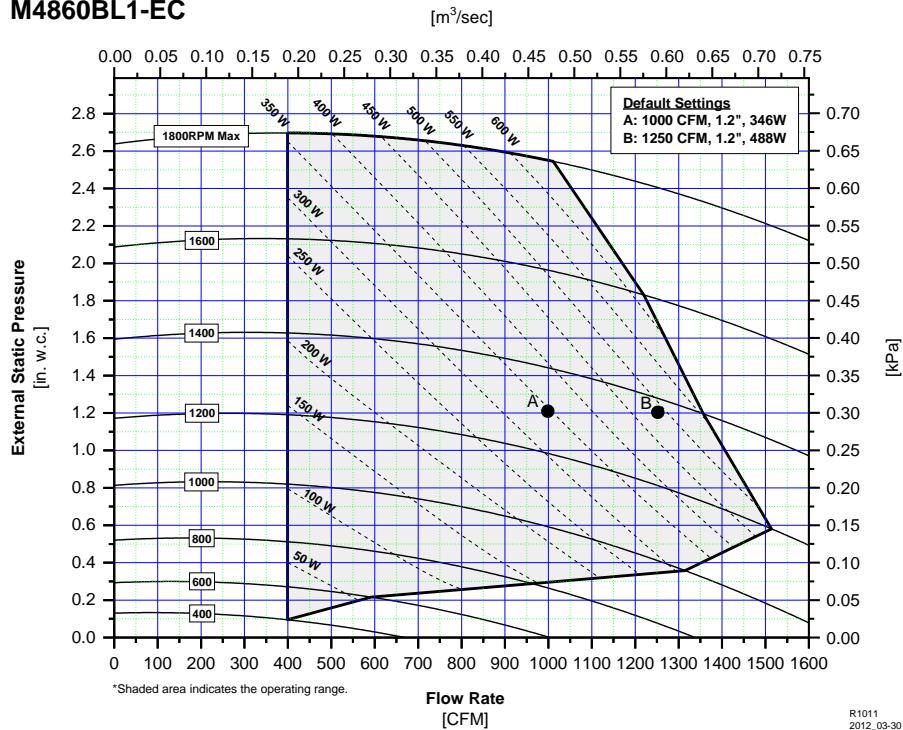
Tag #:

BLOWER MODULE DIMENSIONS



* Contact Unico for dimensions of assembled modules.

M4860BL1-EC



R1011
2012_03-30

Unico, Inc.
<http://tech.unicosystem.com>
 314-481-9000
 800-527-0896
sales@unicosystem.com



Note – for continuous product improvement, Unico reserves the right to change specifications without notice.

© 2020 Unico, Inc., Arnold, MO. "Unico System" is a registered trademark of Unico, Inc. (www.unicosystem.com)

SB-M4860BL1-EC.003 (20200128)

Page 2 of 2