


For: File Resubmit Approval Other _____

V2430B-1EA2/EA3AX 2.5-ton iSeries Vertical AHU

iSERIES

Job Name:	Location:
Date:	Tag #:
Architect:	Engineer:
Mechanical:	Distributor:
Rep:	

(Company)	(Project Manager)
 <p>V2430B-1EA2AX</p>	<p>Remote</p> <p>Control Box</p> <p>EZ Trap</p> <p>Features</p> <ul style="list-style-type: none"> • Easy service EC Motor (Variable Speed) • Removable access panels for ease of service • ASHRAE 62.2-2010 ventilation mode • Use as cooling only or heat pump • Optional hot water coil for heating • Heavy-duty closed cell insulation (no exposed fiberglass insulation) • Includes (shipped loose): <ul style="list-style-type: none"> ○ Clear PVC condensate trap ○ S.M.A.R.T. control board
	<p>Compatible Outdoor Unit</p> <p>IS24G065 IS30G080 IS36G110</p> <p>Indoor Unit</p> <p>C</p>

General Data:

Fan Speeds	Variable
Maximum Motor Speed	1800 RPM
Nominal Airflow	600 CFM (283 L/s)
Static Pressure at Nominal Airflow	1.5 in. w.g. (0.373 kPa)
Sound Pressure (high)	56 dB(A)
Rated performance	see AHRI directory*
Net coil face area	2.72 ft ² (0.25 m ²)
Tube diameter	3/8 in. (9.52 mm)
Number of rows	3
Number of Circuits	4
Fin density	15/in. (590/m)
Design pressure	500 psig (3.45 MPa)
Refrigerant type	R410A
Suction line size	5/8 in. (15.88 mm) OD
Liquid line size	3/8 in. (9.52 mm) OD
Drain size	3/4" FNPT
Net unit weight	117 lbs. (53 kg)
Shipping Weight	177 lbs. (80 kg)

* www.ahridirectory.org

Operating Range:

Nominal Capacity	2.5-ton (9 kW)
Airflow Range	200 to 740 CFM (350 to-1257 m ³ /h)

Electrical:

Motor Type	1EA2/1EA3
Electrical Power	1Ph, 50/60 Hz, 1/2 HP (0.37kW)
Voltage	208-230 V
Min. Circuit Ampacity	4.0 A
Max. Overcurrent Protection	15 A
Motor Full Load Current	3.2 A
Allowable Breaker Sizes	15 A

Optional Accessories:

- Hot water coil (HW-2430)
- Control box extension cable, 98" (2.5 m) (A01525-G02)

Notes:

- All wiring and piping must comply with applicable local and national code
- Absolute operating voltage range: 198 – 253V.
- Refer to installation manual for more information.

Model Number Key:

V	2430	B	-	1	EA*	A	X
Model Series V = Vertical	Matching ODU Nominal Capacity 2430 = 24000 to 30000 Btu/hr	Configuration B = Both		Revision	Motor Style EA2 = 208 – 230V (US) EA3 = 208 – 230V (EU)	Cooling Coil A = 3 rows	Heating Coil X = None H = Hot Water Coil

ODU = Outdoor Unit

V2430B-1EA2/EA3AX

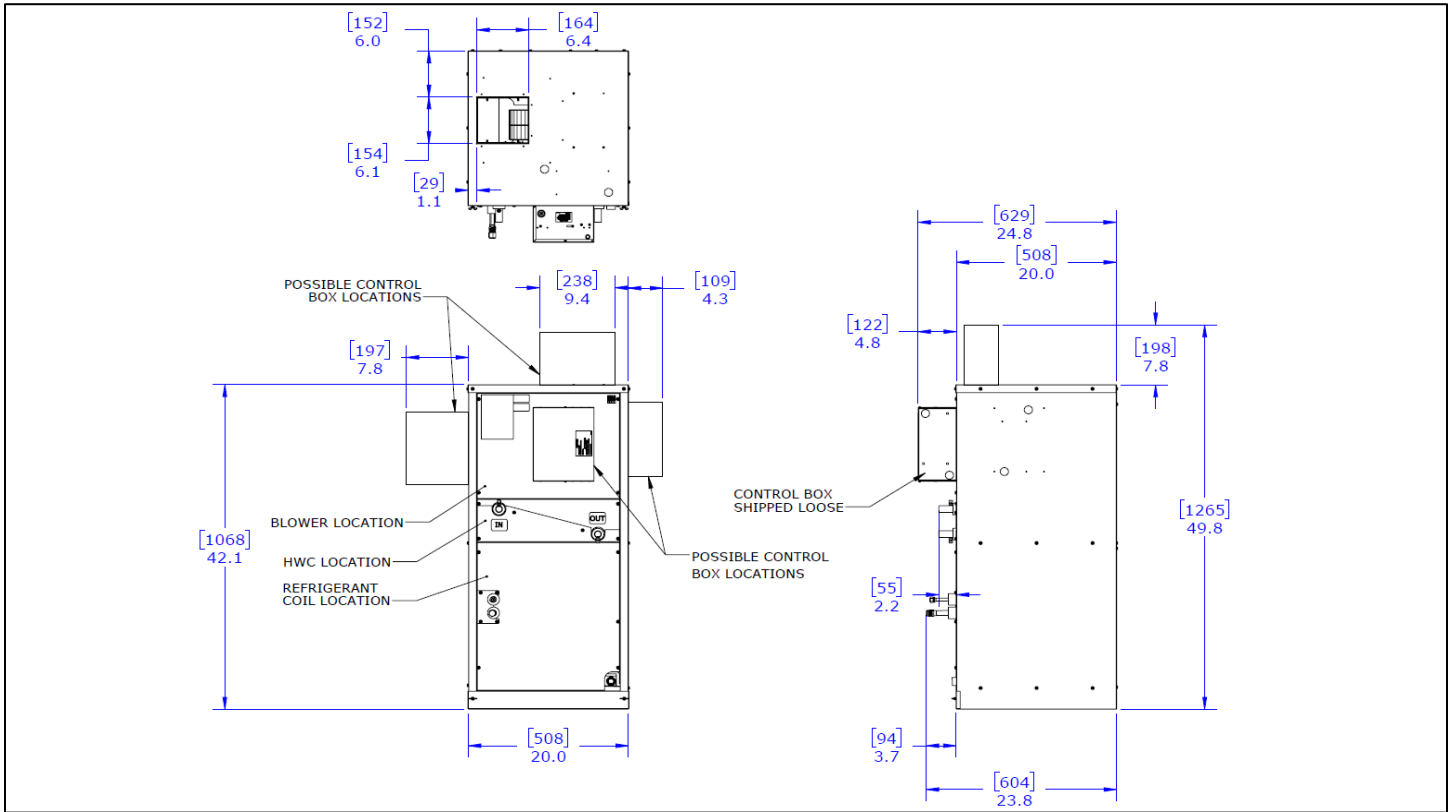
Job Name:

Location:

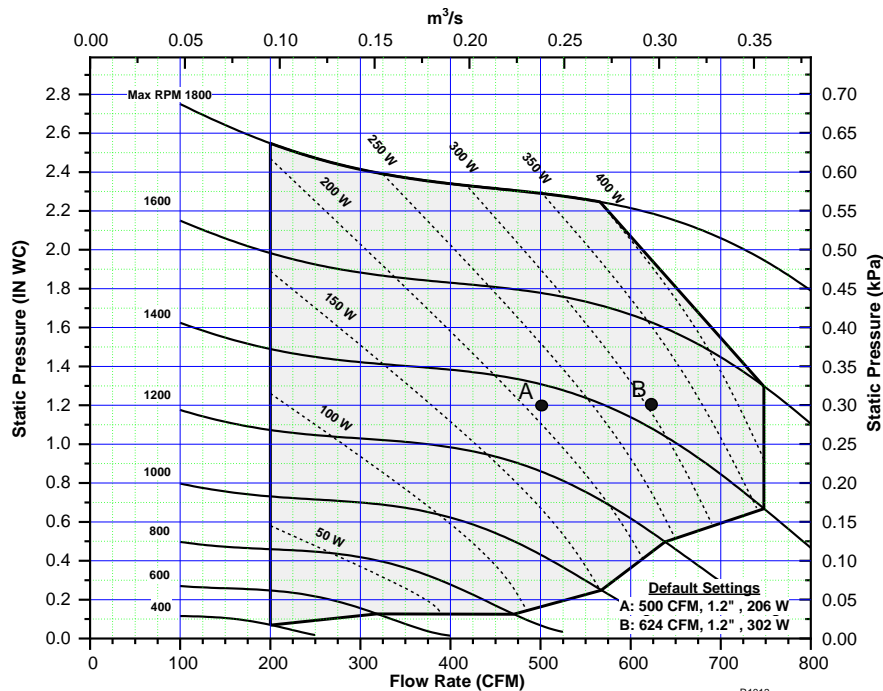
Date:

Tag #:

RETURN AIR PLENUM MODULE DIMENSIONS



* Contact Unico for dimensions of assembled modules.



R1013
 V2430B
 4/18/2014

Unico, Inc.
<http://tech.unicosystem.com>
 314-481-9000
 800-527-0896
sales@unicosystem.com



Note – for continuous product improvement, Unico reserves the right to change specifications without notice.

© 2018 Unico, Inc., Arnold, MO. "Unico System" is a registered trademark of Unico, Inc.

SB- V2430B-EA2/EA3BX.001 (20180503)

Page 2 of 2