



# UPC-56TB/57T/58, 2.0" Round Outlets

## UPC-256/257, 2.5" Round Outlets

### Model Key

Unico Part Code	Outlet Type	Connection Type	Revision	Finish/Angle	Wood Outlet Face Plate Type	Qty.
UPC-	56/57/58: 2" 256/257: 2.5"	(blank) = normal T = Twist-Fit	(blank) B	- BLK: Black - RO: Red Oak - 15: 15° Angle	(blank) = rounded face -F = Flush Mount	-1: 1 -6: 6

\* See page 5 for complete list of materials and colors.

### APPLICATION

The Unico System Supply Outlets are used to terminate and anchor the Supply Duct to a ceiling, floor, or wall and to provide quiet delivery of high velocity air to the conditioned space. The 0.25-inch (6 mm) raised face plate is the only part visible in the room. Unico round outlets are available in a variety of colors and materials as shown on page 5. The standard Supply Outlet (UPC-56TB/UPC-256) comes in white plastic.

The wood faced outlet (UPC-57T/UPC-257) is identical in size to the standard outlet except for the unfinished solid wood face, which can be stained and finished to match your existing floor. The last two spaces (XX) in the part number for the wood outlet designate the wood type. Wood outlet faces are offered in a variety of wood types.

The Twist-Fit System™ (TFS) provides fast and easy attachment of 2-inch supply duct from the plenum to the outlet. The TFS Outlets (UPC-56TB and UPC-57T) have all the face plate options of the UPC-56B and UPC-57 with the benefit of a quick and easy installation.

For use in vaulted ceilings, Unico offers the UPC-58-1-XX outlet which includes an angled face. The outlet is available with the faceplate angled at either 15° or 25°. The angled outlets are not available with the Twist-Fit System connectors and are only available in white.

All outlets can be painted or stained to match any décor and the UPC-56TB are available in black, brass, or chrome along with the standard white. UPC-56TB/57T are shipped with toggles and screws. Standard installation and outlet kits include the white UPC-56TB outlet.

### SPECIFICATIONS

Recommended airflow:	30 to 35 CFM (14 to 16.5 l/s) 20 to 40 CFM (9.4 to 18.9 l/s) acceptable
Recommended number of outlets:	6 per nominal ton (1.7 outlets per kW)
Outlet material:	30% glass filled Polypropylene UL-94 Rating-HB (UPC-56TB/57T/, UPC-58 base) wood, unfinished (UPC-57T faceplate)
Size of opening:	4-inch (100-mm) or 3-3/8-inch (86-mm)
Weight:	UPC-56TB/58: 3.0 oz (85 g) UPC-57T: 4.2 oz (119 g)

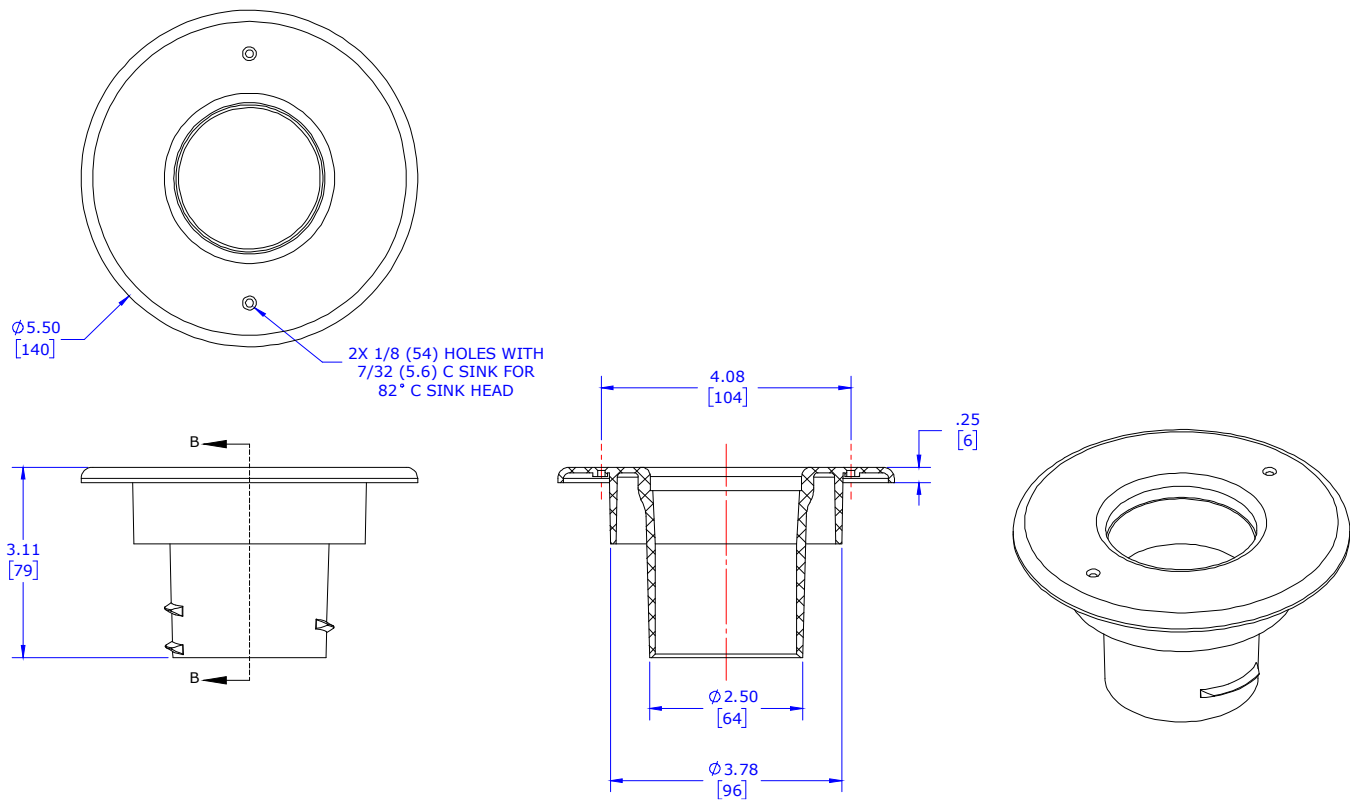
### INSTALLATION

For installation instructions of the Unico System Outlets and Twist-Fit System Outlets, see Bulletin 30-05 Installation Manual for Air Distribution Systems. For installation instructions of the Twist-Fit System Outlets to other TFS connectors or supply ductwork, see Bulletin 30-051 Twist-Fit System Installation Instructions, and Bulletin 30-054 Twist-Fit System and Supply Duct Install Instructions.

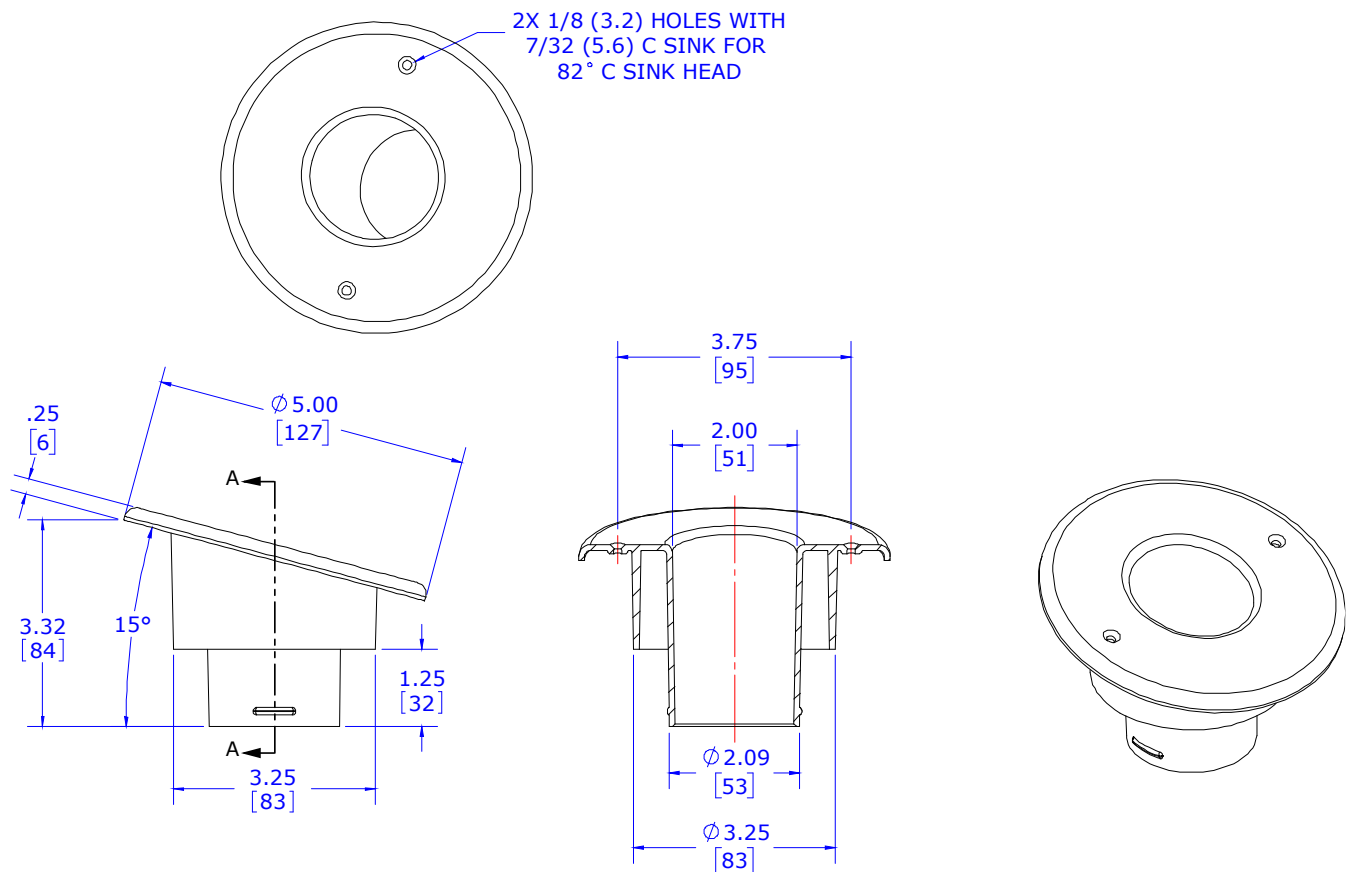


**Figure 1. Supply Outlet (UPC-56TB)**

## DIMENSIONAL DATA



**Figure 2. UPC-256 Dimensions**



**Figure 3. UPC-58-15**

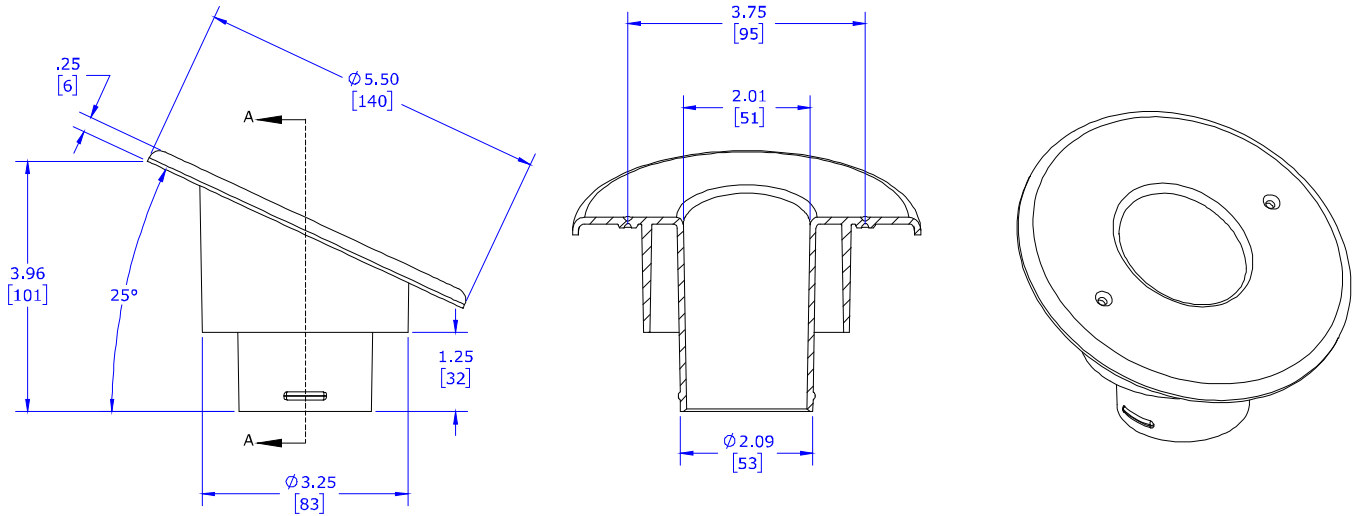


Figure 4. UPC-58-25

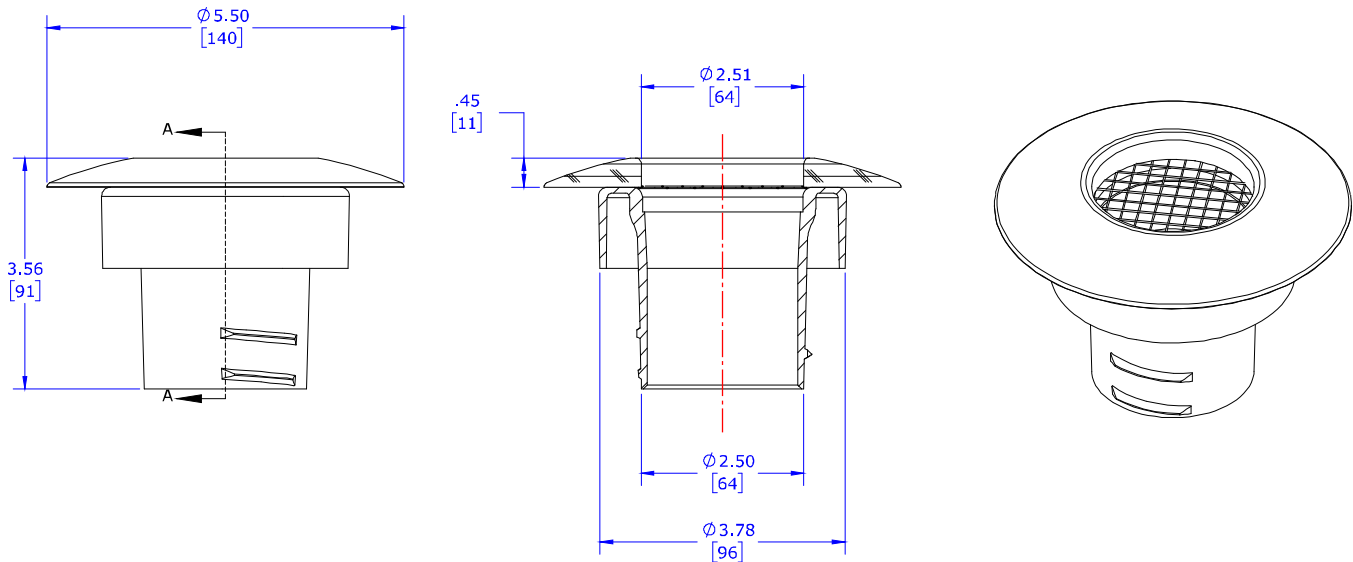


Figure 5. UPC-257 Dimensions

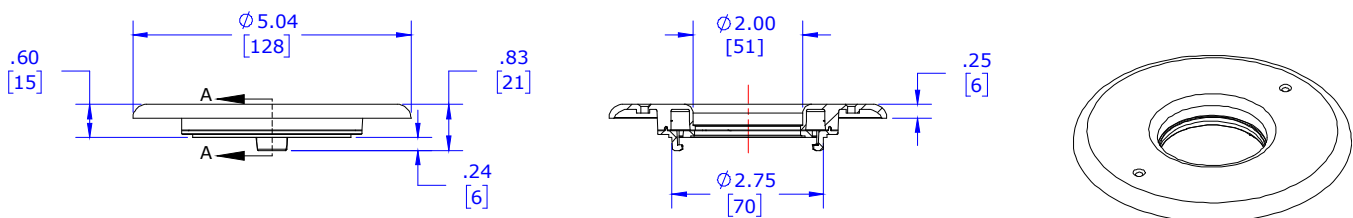


Figure 6. UPC-56TB Dimensions (2-inch only)

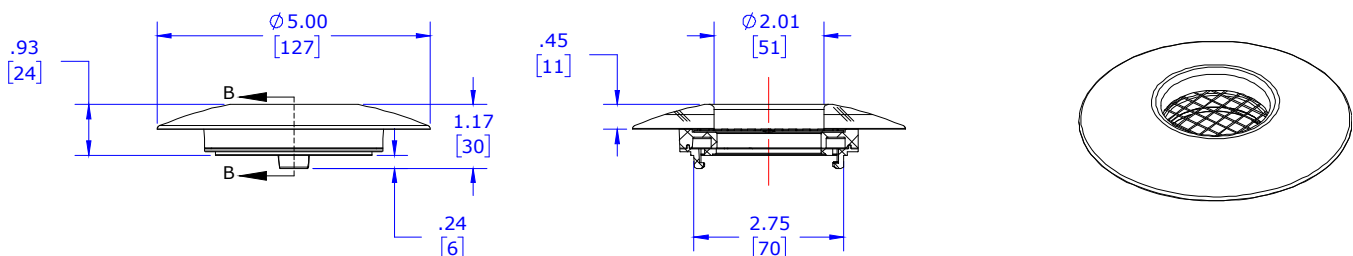
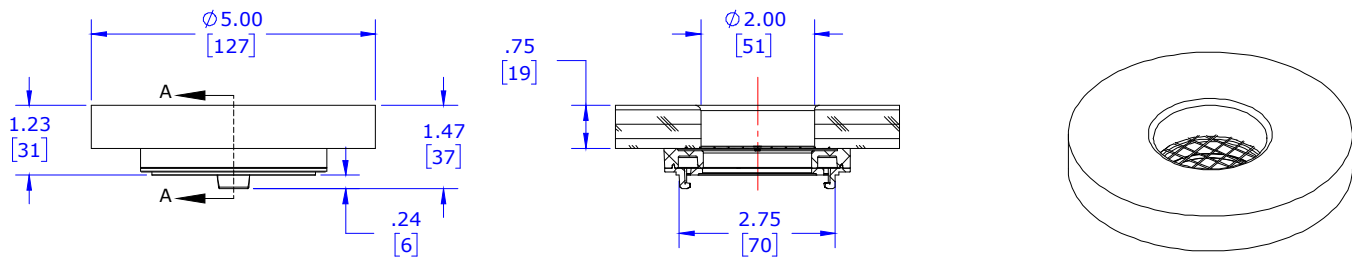


Figure 7. UPC-57T-XX



**Figure 8. UPC-57T-XX-F Dimensions**

**Unico Outlets are available in the following optional finishes:**

<b>UPC-56TB/256B</b>					
	White	Black (-BLK)	Chrome (-CHR)	Brass (-BRS)	
<b>UPC-57T/257/-XX</b>					
	Red Oak (-RO)	Knotted Pine (-K)	Maple (-MA)	Mahogany (-MH)	Pine (-PI)
					
	Poplar (-PO)	Cherry (-C)	Walnut (-WL)	White Oak (-WO)	Birch (-B)
<b>UPC-58</b>					
	Angled (25° shown)				