

For: File Resubmit Approval Other _____

M1218CL1-C 1.5-ton SDHV Modular Chilled Water Coil

Job Name:	Location:
Date:	Tag #:
Architect:	Engineer:
Mechanical:	Distributor:
Rep:	
(Company)	(Project Manager)



Features

- Modular construction
- Multiple configurations
- Painted options available
- Enhanced Aluminum fins
- Copper tubes
- Stainless steel drain pan
- Includes:
 - EZ trap (shipped loose)

Matching Modules

M1218BL1-EC1
M1218BL1-EC2
M1218BL1-ST2
M1218BL1-E
M1218CL1-H

Indoor Unit Size

1218

Operating Range:

Nominal Capacity	1 to 1.5-ton (3.5 to 5 kW)
Airflow Range	100 to 500 CFM (170 to-850 m ³ /h)

Optional Accessories:

- Hot water coil heating module (M1218CL1-H)
- Secondary drain pan (UPC-94)
- Return adapter (UPC-104-1218)

General Data:

Net coil face area	1.17 ft ² (0.11 m ²)
Tube diameter	3/8 in. (9.52 mm)
Number of rows	6
Fin density	14/in. (551/m)
Design pressure	500 psig (3.45 MPa)
Refrigerant type	Water
Connection size	5/8" OD
Drain size	1/2" FPT
Net unit weight	52 lbs. (24 kg)
Shipping Weight	57 lbs. (26 kg)
Dimensions (H x W x D)	12 x 20 x 16.6 in. (305 x 514 x 421 mm)

Notes:

1. All wiring and piping must comply with applicable local and national code.
2. Refer to installation manual for more information.

Model Number Key (available models):

M	1218	C	L	1	-	C	W1
Model Series	Nominal Capacity	Module Type	Configuration	Revision		Style	Options
M = Modular	1218 = 12000 to 18000 Btu/hr	C = Coil	L = Left R = Right			C = Chilled Water	W1 = Paint White T = Technicote

M1218CL1-C

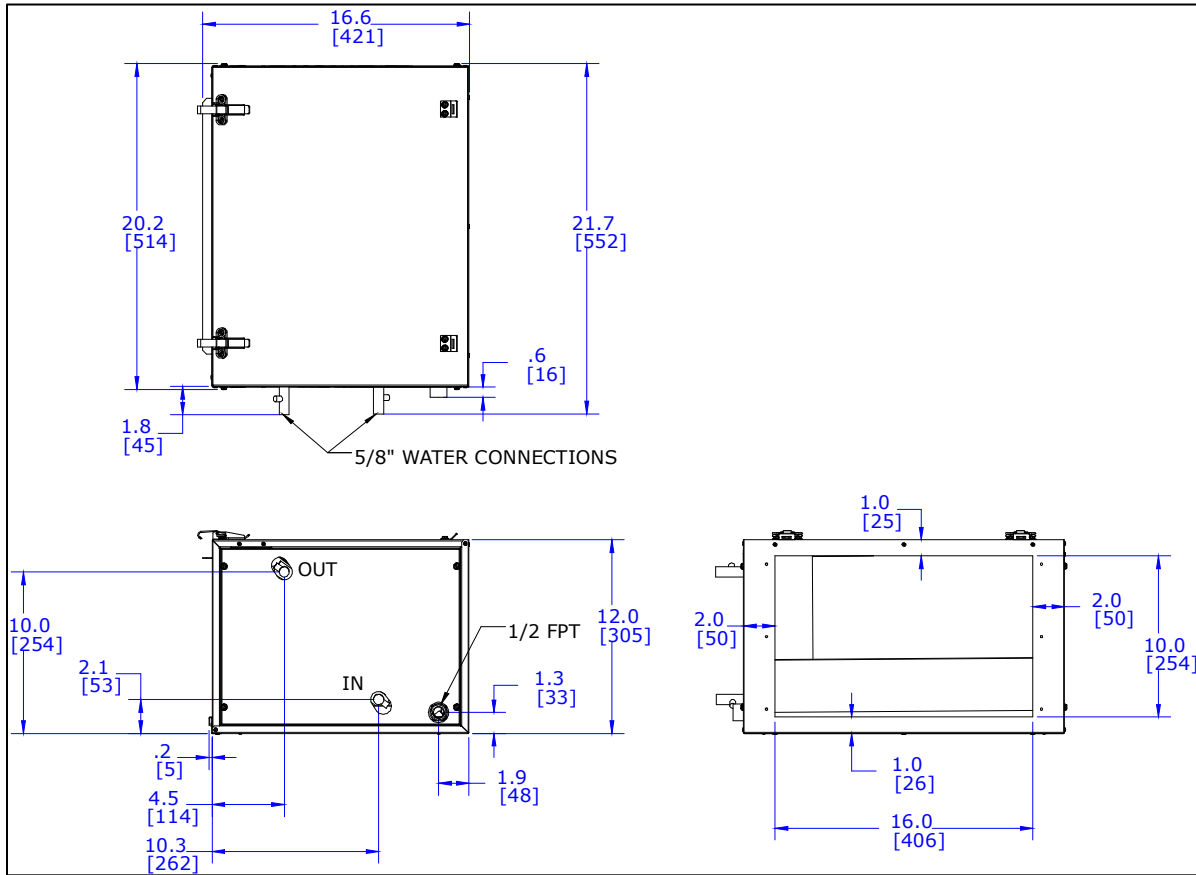
Job Name:

Location:

Date:

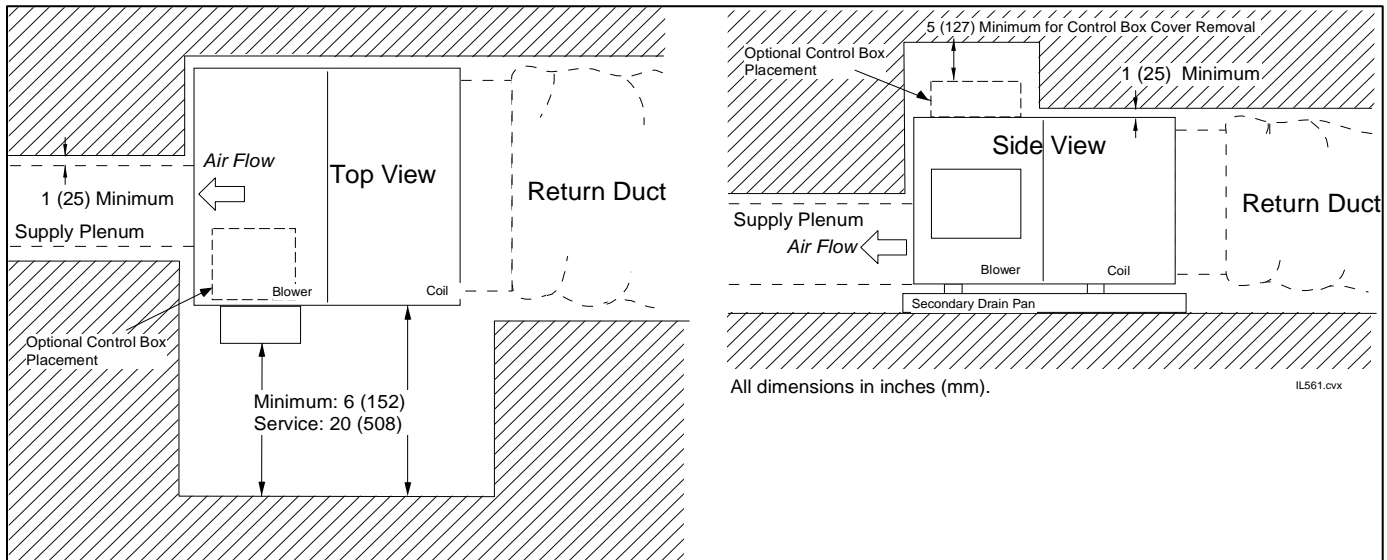
Tag #:

CHILLED WATER COIL MODULE DIMENSIONS (LEFT HAND)



* Contact Unico for dimensions of assembled modules or for right hand dimensions

Installation Clearances



Unico, Inc.

<http://www.unicosystem.com>

314-481-9000

800-527-0896

sales@unicosystem.com

